

# BROOMFIELD FRIDAY FLYER

14th September 2018

## IMPORTANT DATES

### OCTOBER

- 8th Y6 Class Assembly—*parents welcome*
- 9th Parents Evening
- 10th Parents Evening
- 11th Y6 Cadbury World visit
- 12th SCHOOL CLOSED—INSET DAY
- 14th *Half-Term*
- 22nd Flu Vaccinations—**NEW**
- 24th Parents Evening
- 25th Individual/Family Photographs
- 26th FOBs Spooky Disco

### NOVEMBER

- 7th No pen day
- 16th Children in Need
- 19th Y3/4 Mr Fernandez Class Assembly—*Parents welcome*
- 23rd Y6 Takeover Day
- 30th Y Theatre visit—Whole School

### DECEMBER

- 11th KS1 play to parents
- 7th FOBs Christmas fair
- 12th KS2 Play to parents
- 13th KS2 Play to parents

#### ATTENDANCE

HIGHEST = Miss Trowbridge 100%

SCHOOL = 96.6%

#### House Points

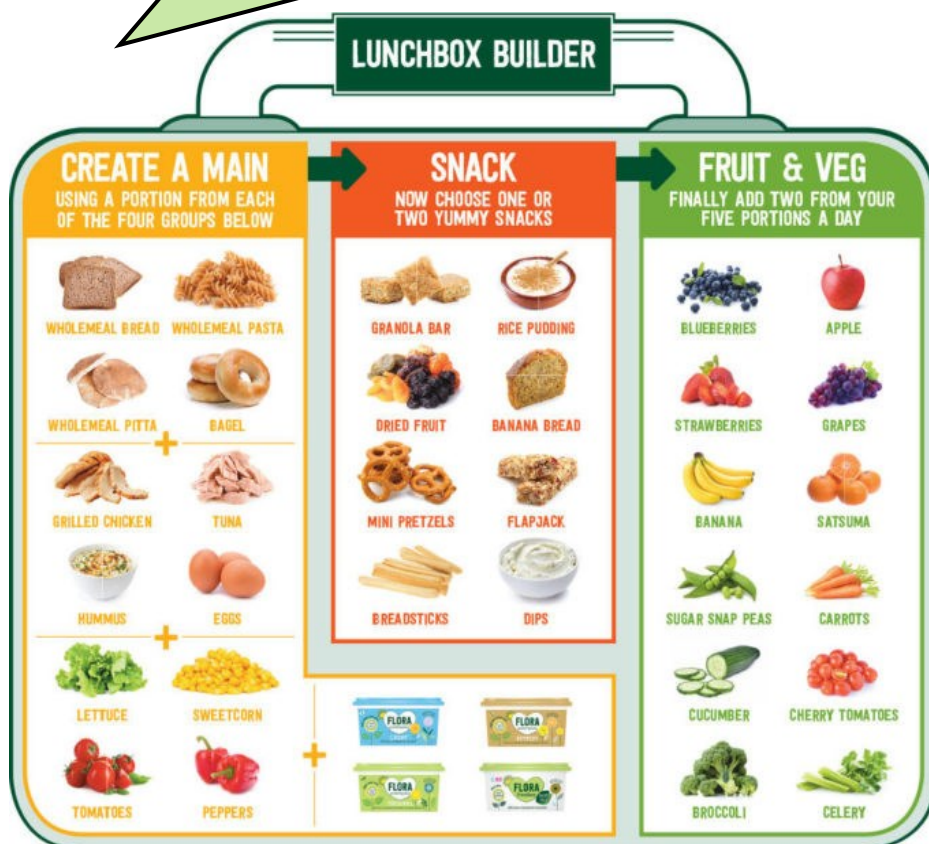
<b>WILD ROSE:</b>	<b>226</b>	<b>(431)</b>
<b>CLOVER:</b>	<b>133</b>	<b>(285)</b>
<b>BROOM:</b>	<b>128</b>	<b>(303)</b>
<b>FOXGLOVE:</b>	<b>169</b>	<b>(291)</b>

## School Dinners menu Week 1

## WEEKLY NEWS

- This week in assembly we discussed the '5 R's' of Positive Learning behaviours—Resilience, Respect, Risk-Taking, Responsibility and Reflection and how these help us to become confident self-reliant learners.
- Our Boys Y5/6 football team got through to the finals at Wreake Valley this week but sadly lost on penalties.
- Year 4 guitar lessons are going well—please remember to return your letters to allow children to take their guitars home to practise.
- We were joined in assembly today by Rev Tim Day who discussed new beginnings with everybody.
- Finally a thank you again to those families that were able to join us for our 'Meet the teacher' evening this week for Key Stage 2. As always, I hope that you found it useful.

## HEALTHY LUNCHBOX IDEAS



Just for a laugh...

Q: What do you call a cow that plays a guitar?

A : A moo-sician!

Q: What is the difference between a guitar and a tuna fish?

A: You can tune a guitar but you can't tuna fish.